

DISTURBING ORGANIC HORROR INSTRUMENTALS SFX LIBRARY



CINETOOLS pres.

# NOCTURNE

ALL GIVES YOU SENSE OF DANGER AND WILL KEEP YOU AWAKE AT WHOLE NIGHT!



DISTURBING ORGANIC HORROR INSTRUMENTALS SFX LIBRARY

CINETOOLS pres.

# NOCTURNE

ALL GIVES YOU SENSE OF DANGER AND WILL KEEP YOU AWAKE AT WHOLE NIGHT!

Open your minds to fear!! Cinetools proudly presents "Nocturne" a beguiling mix of organic horror instrumentals and orchestration wizardry.. Featuring +20GB inspirational SFX which cuts to the heart of the modern horror aesthetic and subtly fear-inducing at every sounds! Psychologically hard-hitting, utterly terrifying, discordant, dreary, ghastly and an emotional gut-punch! This library is sure to make your audience tremble with its dreadfully intense soundscapes packed with shock, fright, and terror and will stick in your head for a while..

"Nocturne" is a combination of orchestra and synthesizer helps you underscoring the paranoia in your production and filled with dark and deliriously disturbing sound design elements. From psychotic stabs to anxious shockers, warped organic soundscapes to nightmarish scraped strings, hauntingly dark cellos to sinister plucks, chaotic sequences to blood curdling experimental textures, dissonant notes to tortured violins, unnerving jump-scares to heart-stopping melodics, hair-rising transitions to creepy atmospheres, cinematic drums to intense hits with squawking stingers and dissonant pianos leading you toward hell.. Perfect for supplementing the horror-dose of your projects!

In detail expect to find +20GB of high quality sounds including 2519 SFX divided into two main folders Designed SFX and Designer Tools. Designed SFX Folder contains 1058 ready-to-use sounds consist of 82 Atmospheres, 40 Booms, 122 Experimental Textures, 148 Hits, 76 Jumpscars, 103 Melodics, 25 Openers & Closers, 52 Pings, 25 Plucks, 16 Reverses, 14 Sequences, 24 Shockers, 27 Signatures, 45 Soundscapes, 105 Stabs, 65 Stingers, 42 Suckbacks and 47 Transitions. Every sound in "Designed SFX" folder was meticulously recorded at 24bit / 192kHz with various playing techniques; bowed, creak, hit, screech etc.. then designed and delivered in industry-standard 24bit / 96kHz to ensure the highest quality for today's cinematic production needs.

"Designer Tools" includes 1461 sounds contains an extensive collection of various aleatoric instruments such as aqua-phones, chimes, glockenspiels, spring drums, thunder beatbox, pianos, thunder tubes, glasses etc... All these are waiting to be discovered in this folder and ready to help you to design your own unique sounds from scratch. You are totally free to manipulate any of them by mixing other sounds, don't be afraid to experiment to reach impressive sounds, the options are endless..

This tremendous library is perfect for modern horror, dark and twisty psychological thriller productions or projects and is also be well suited in many other situations where film standard sound is required.. This library is a good source for anyone interested in any dark scenario, intense themes, suspense scenes, dark underscores, fearful backdrops or just something original!

Unleash the power of fear and take your audience on a spine-chilling journey into the depths of horror.



THANK YOU!

Thank you for enjoying "Nocturne" a beguiling mix of organic horror instrumentals and orchestration wizardry.. Featuring +20GB inspirational SFX which cuts to the heart of the modern horror aesthetic and subtly fear-inducing at every sounds! Psychologically hard-hitting, utterly terrifying, discordant, dreary, ghastly and an emotional gut-punch!

If you have any questions or need anything at all, just let us know. We're always happy to hear from you..

Email: [info@cine-tools.com](mailto:info@cine-tools.com)

Thanks!  
Cinertools Team

DISTURBING ORGANIC HORROR INSTRUMENTALS SFX LIBRARY

CINETOOLS pres.

# NOCTURNE

ALL GIVES YOU SENSE OF DANGER AND WILL KEEP YOU AWAKE AT WHOLE NIGHT!



**LICENSE AGREEMENT**

By downloading the library you accept the following license agreement:

**LICENSE GRANT**

This license is granted for a single user only (and is given on a worldwide basis). The license is non-exclusive and is granted for the full period of copyright protection and sound samples. No unlicensed use is permitted. All sounds and samples contained in this product are copyrights of Cinetools.

Cinetools allows you to use any of the sounds and samples in the library(s) you've purchased for the creation and production of commercial recordings, music, sound design, post production, or other content creation without paying any additional license fees. The Licensee may use the Sounds in combination with other sounds in music productions (which include soundtracks of such as films, video productions, radio/TV programs or commercials, computer games and multimedia presentations, library music), public performances, and other reasonable musical purposes within musical compositions.

The Licensee may modify the Sounds and may use the Sounds for commercial purposes as part of a musical composition with other sounds.

This license expressly forbids usage of Cinetools products (in particular samples, loops, cues) to create sounds OR other content for any kind of virtual instrument, sample library, sample-based product, musical instrument, or competitive products that are sold or relicensed to multiple third parties. In these scenarios the Licensee must arrange an extension with Cinetools.

In addition, "naked" or "isolated" samples, loops, cues are not to be sold or distributed as individually licensable "stripes", "work parts" or "elements" and cannot be used to create tracks for Library Music.

This license also forbids any unauthorized transfer, resale or any other form of re-distribution of this product, or its constituent sounds or programming, through any means, including but not limited to re-sampling, reverse engineering, de-compiling, remixing, processing, isolating, or embedding into software or hardware of any kind. You cannot electronically transfer the sound samples or place them in a time-sharing or service bureau operation or a computer/sampler network.

**RIGHTS**

Cinetools retains full copyright privileges and complete ownership of all recorded sounds, instrument programming, documentation and musical performances included within this product.

**REFUNDS**

Downloaded libraries can't be returned, so we can't provide refunds or exchanges - unless you have a faulty product. In this scenario, that product will be exchanged for the same product for a period of 30 days - PLEASE be aware that as soon as you've downloaded it, it can not be returned.

**TERMS**

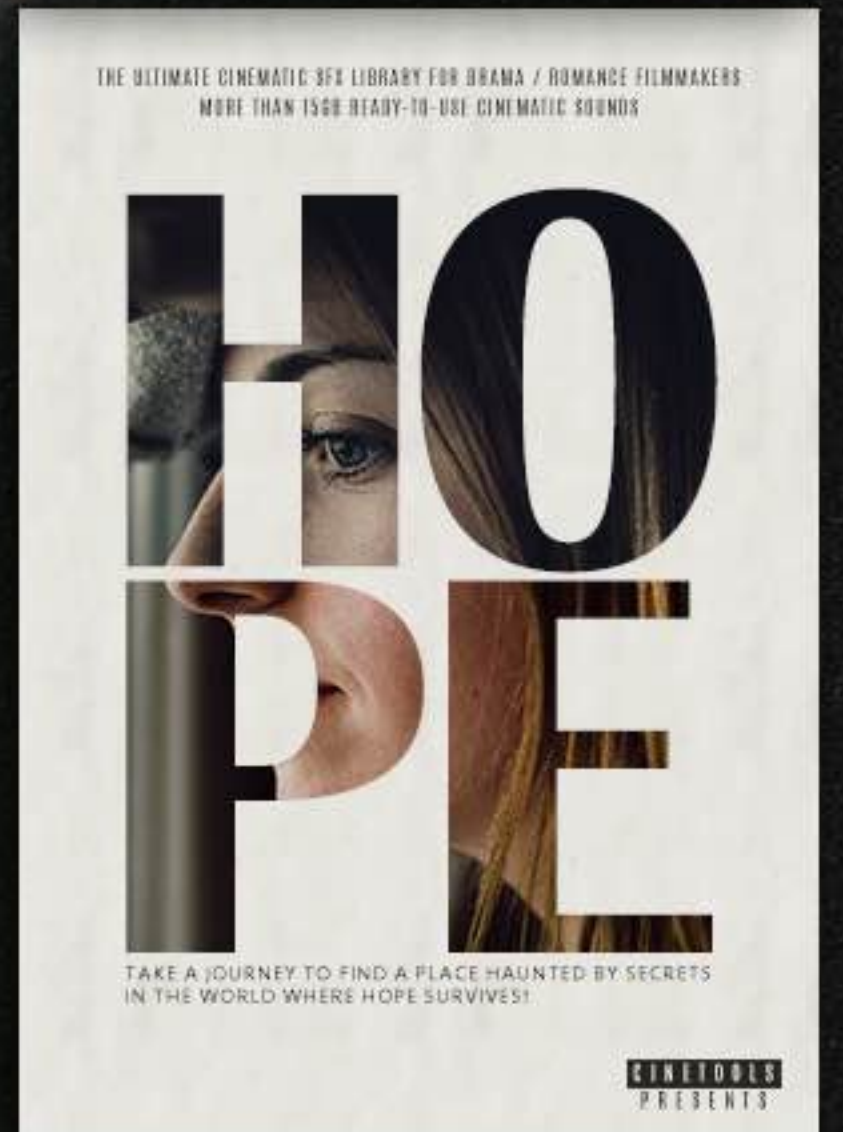
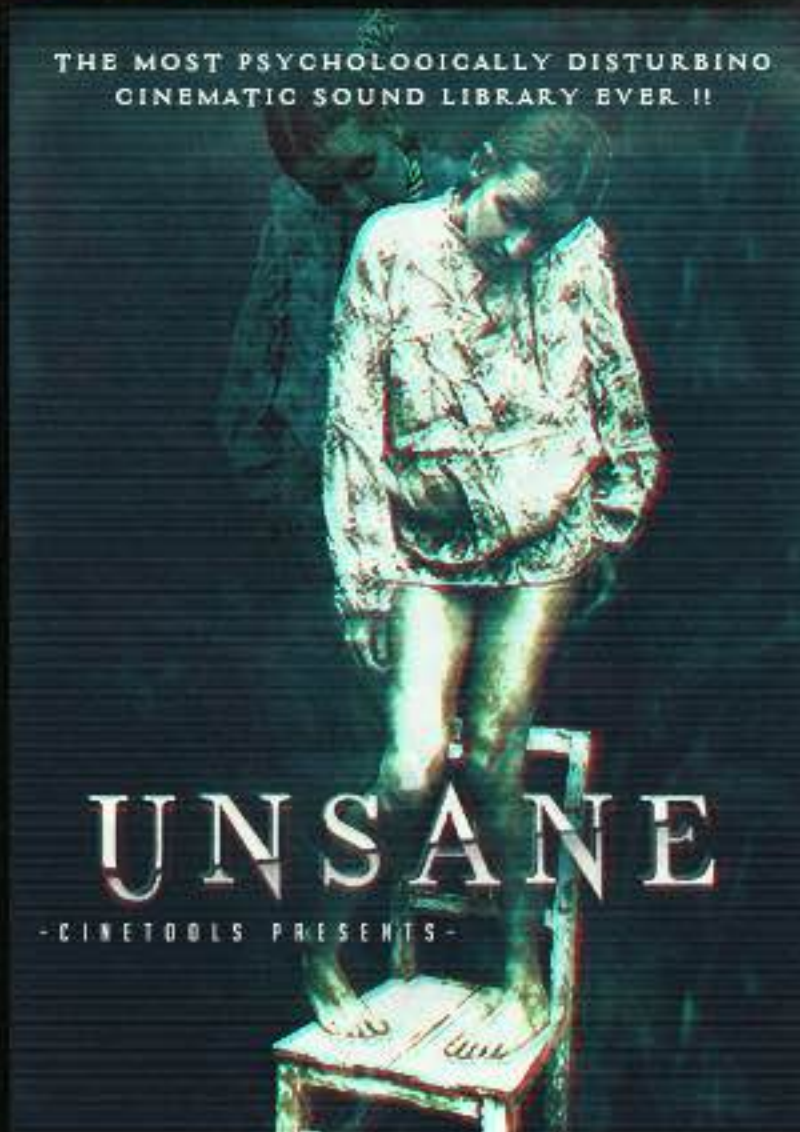
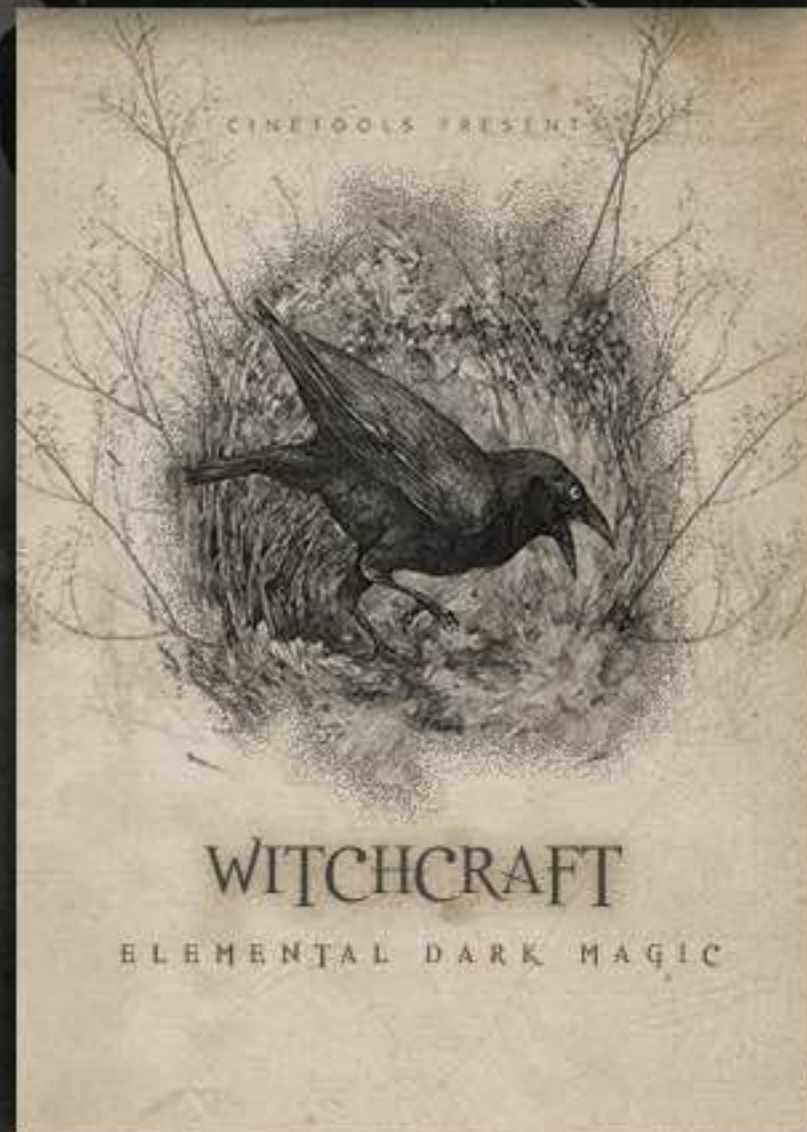
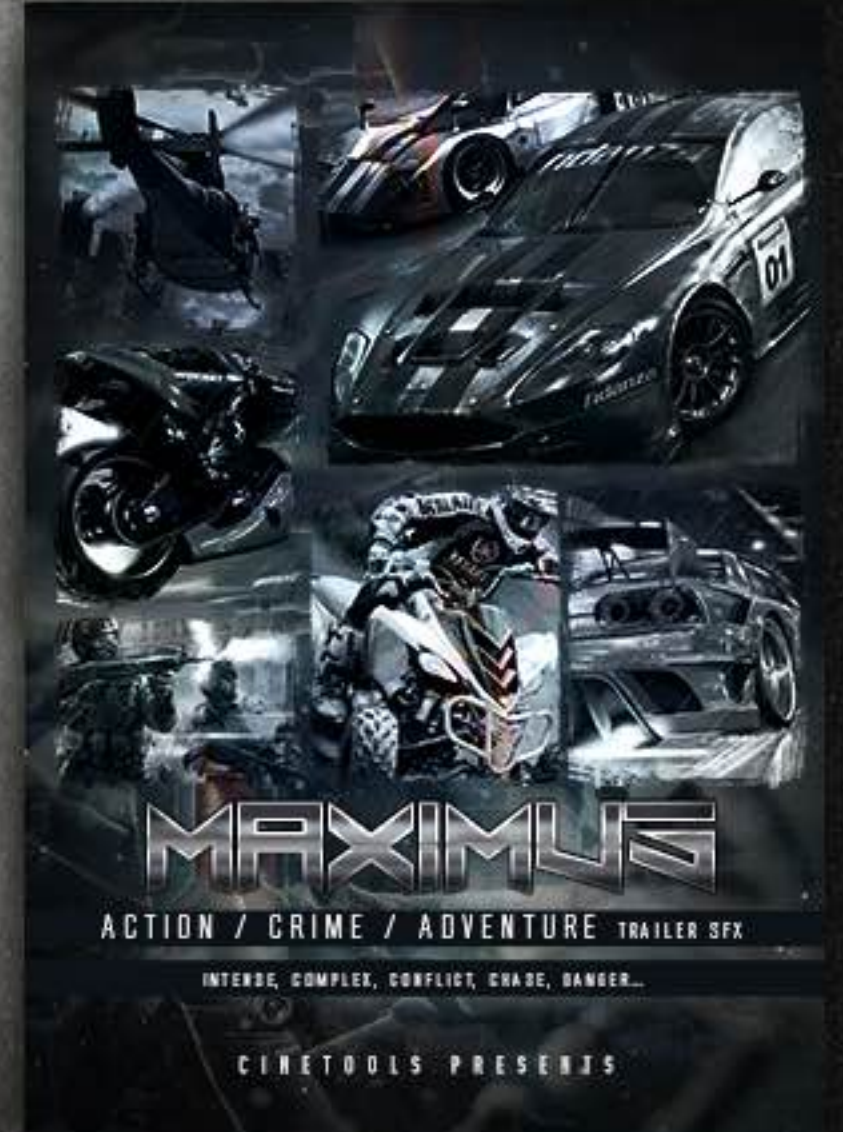
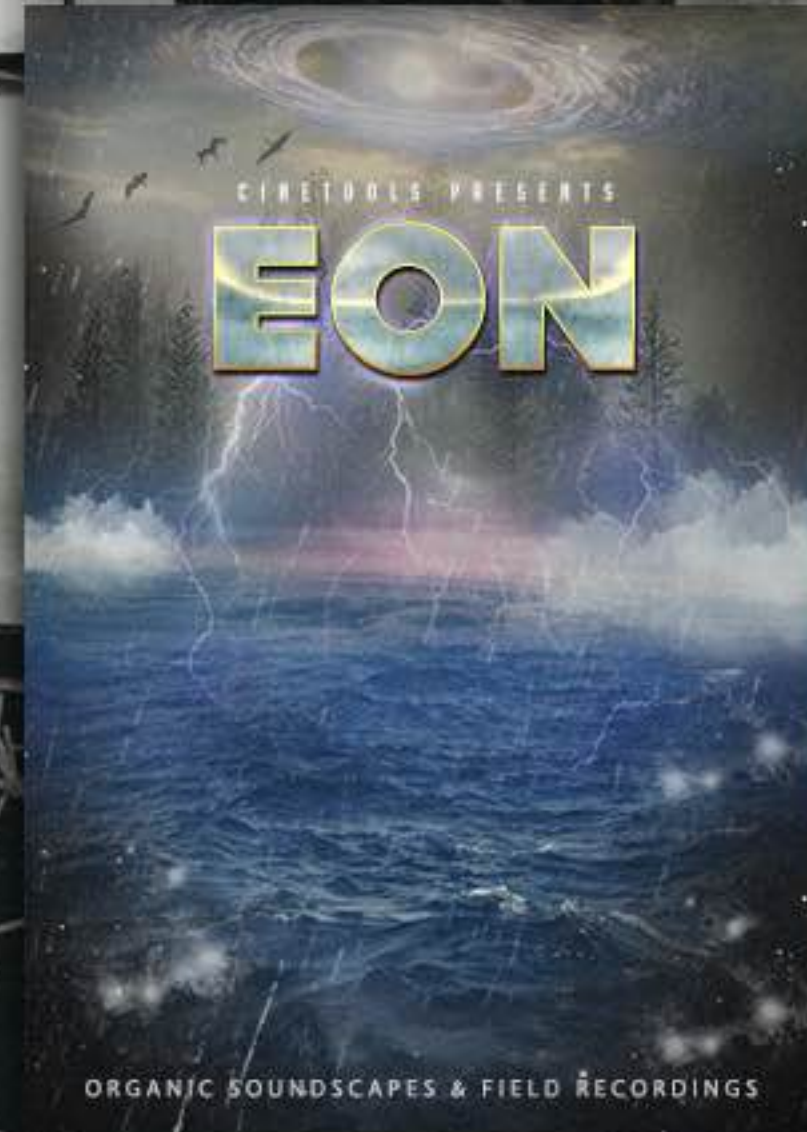
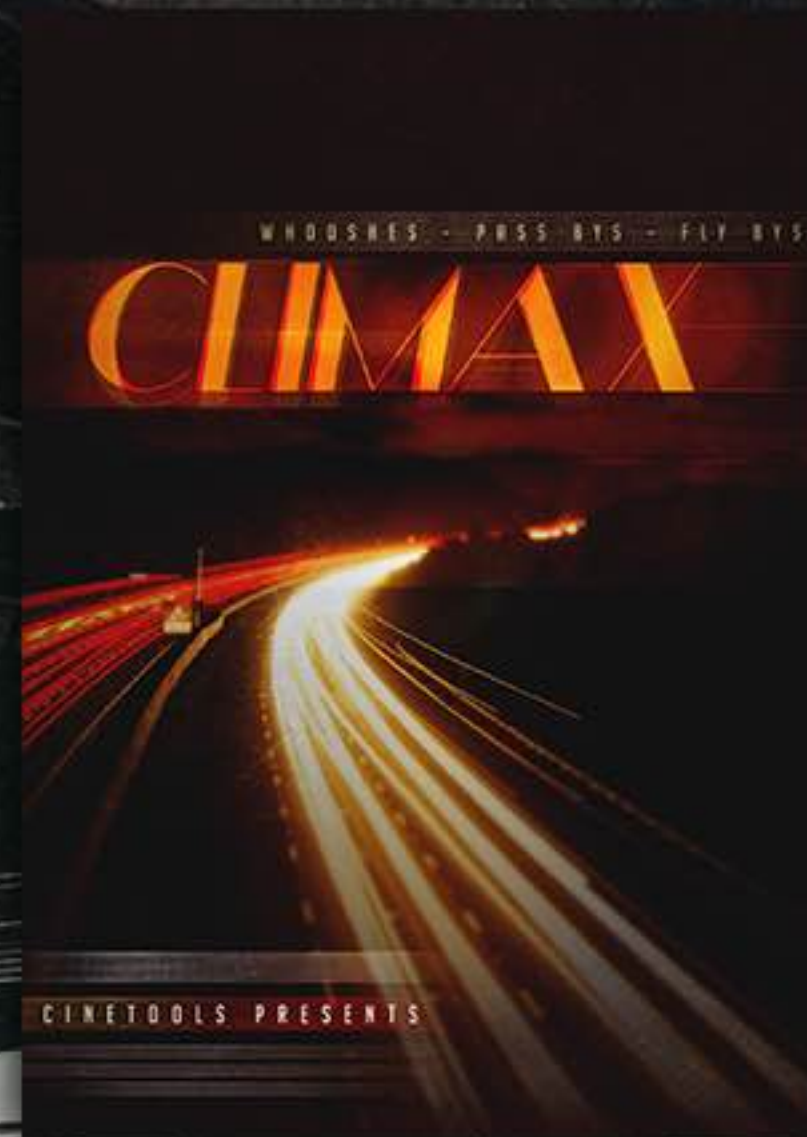
This license agreement is effective from the moment the product is purchased or acquired by any means. The license will remain in full effect until termination by Cinetools. The license is terminated if you break any of the terms or conditions of this agreement, or request a refund for any reason. Upon termination you agree to destroy all copies and contents of the product at your own expense.

Licenses cannot be transferred or sold to another entity, without written consent of Cinetools.

By purchasing this product you agreed all the terms, conditions and limitations of use contained in this agreement.



Be sure to check out our other SFX Libraries!!









"CINEMATIC INTROS" Series



"PRODUCTION ELEMENTS" Series





“DESIGNER TOOLS” Series

“NATURE AMBIENCES” Series

CINETOOLS  
**METALLIUM**  
RUMBLES & RATTLES - HITS & IMPACTS - CREAKS & SQUEAKS  
FRICTIONS - MOVEMENTS - DRONES - SCRAPES & SCRATHES  
DESIGNER TOOLS

CINETOOLS  
**WATER FLOW**  
NATURE AMBIENCES

CINETOOLS  
**MACHINERY**  
DESIGNER TOOLS

CINETOOLS  
**CALM WAVES**  
NATURE AMBIENCES

CINETOOLS  
**REED FOREST**  
NATURE AMBIENCES

“TRAILER CUES” Series

TRAILER CUE SERIES  
CINETOOLS PRESENTS  
**SAVAGES**  
HORROR & THRILLER  
BONE-CHILLING AND BLOOD-CURLING INTENSE TRAILER CUES

TRAILER CUE SERIES  
CINETOOLS PRESENTS  
**APEX**  
DANGER / SUSPENSE / DRIVING / INTENSE / ENERGETIC  
CUTTING-EDGE SOUND DESIGN CUES FOR MOVIE TRAILERS AND TV PROMOS

TRAILER CUE SERIES  
CINETOOLS PRESENTS  
**APEX 2**  
DANGER / SUSPENSE / DRIVING / INTENSE / ENERGETIC  
CUTTING-EDGE SOUND DESIGN CUES FOR MOVIE TRAILERS AND TV PROMOS

TRAILER CUE SERIES  
CINETOOLS PRESENTS  
**FRIGHTMARE**  
HORROR / TENSE / SUSPENSE / CREEPY / TERRIFYING  
CUTTING-EDGE SOUND DESIGN CUES FOR MOVIE TRAILERS AND TV PROMOS

TRAILER CUE SERIES  
CINETOOLS PRESENTS  
**FANTASIA**  
FANTASY / EPIC ADVENTURE / MYSTERY / DRAMA  
CUTTING-EDGE SOUND DESIGN CUES FOR MOVIE TRAILERS AND TV PROMOS

TRAILER CUE SERIES  
CINETOOLS PRESENTS  
**METROPIA**  
DARK SCI-FI / THRILLER  
CUTTING-EDGE SOUND DESIGN CUES FOR MOVIE TRAILERS AND TV PROMOS

TRAILER CUE SERIES  
CINETOOLS PRESENTS  
**EXTREMUM**  
ACTION / THRILLER  
CUTTING-EDGE SOUND DESIGN CUES FOR MOVIE TRAILERS AND TV PROMOS

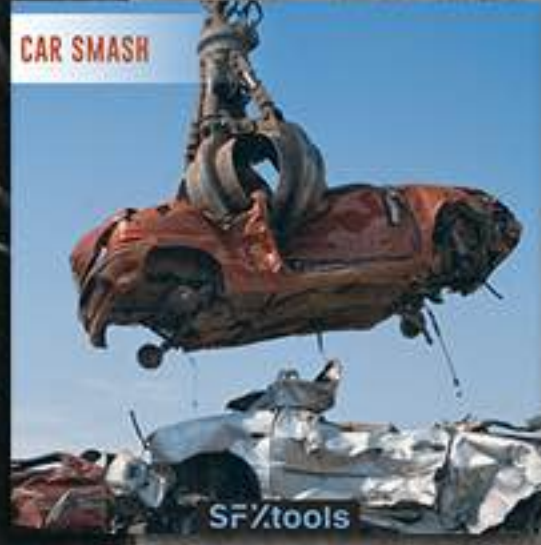
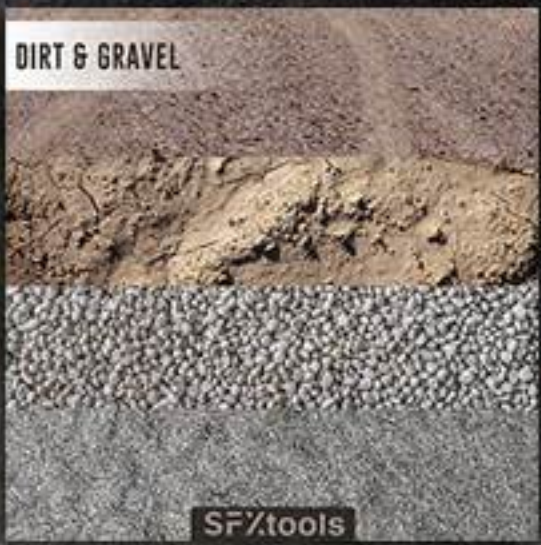
TRAILER CUE SERIES  
CINETOOLS PRESENTS  
**OUTBREAK**  
DARK / THRILLER / SUSPENSE  
CUTTING-EDGE SOUND DESIGN CUES FOR MOVIE TRAILERS AND TV PROMOS

TRAILER CUE SERIES  
CINETOOLS PRESENTS  
**REACTION**  
ACTION / THRILLER / DRAMA  
CUTTING-EDGE SOUND DESIGN CUES FOR MOVIE TRAILERS AND TV PROMOS

TRAILER CUE SERIES  
CINETOOLS PRESENTS  
**MEMORIA**  
DRAMA / ROMANCE  
CUTTING-EDGE SOUND DESIGN CUES FOR MOVIE TRAILERS AND TV PROMOS



Be sure to check out SFXtools's Libraries!!





Be sure to check out SFXtools's Libraries!!

